

*"We stick to your requirements"*

# FUNCTIONAL ADHESIVE & MATERIAL

## INDUSTRIAL ADHESIVE TAPES

### STANDARD AND CUSTOMISED SHIELDING, INSULATING & CONDUCTIVE MATERIALS

This comprehensive guide is specially compiled for professionals in the fields of Electronic/Mechanical designing & engineering, Material converting/fabricating and most of all, it is for YOU, who is reading it right now.

[www.edehege.com](http://www.edehege.com)

**ADH**  
EDEHEGE

*We stick to your requirements*

**Double Sided Tape -**

*Non-woven Carrier*

*Tissue Carrier*

*Polyester Film Carrier*

**Transfer Tape -**

*Non Carrier*

**Differential Tape -**

*Silicone / Acrylic*

*Temporary / Permanent*

**Acrylic Foam Tape -**

*White / Grey / Colourless*

**Polyester Film Tape -**

*Clear / Black*

**Copper Foil Tape -**

*Conductive / Emboss*

**Aluminium Foil Tape -**

*Conductive / Emboss*

**Double Sided CU/AL Tape -**

*Conductive*

**Copper & Aluminum Foil -**

*Various grades & thicknesses*

**Multilayered Laminates -**

*Foil / PET / Adhesive*

**Polyimide Tape -**

*Various grades & thicknesses*

**Insulation & Decoration Film -**

*Polycarbonate PC*

*Polyester PET*

*Polyimide PI*

*Coated film*

**Thermal Conductive Material -**

*Silicone thermal pad*

**Rotary Die-Cutting Machines -**

*Design & produce*

*Flexible & Hard die-cutting tool*

**Tyco Adhesives (USA)-**

*Designed adhesive*

*(Betham & Polyken)*

**Sony Chemicals (JAPAN) -**

*Shielding tapes*

*UT Series (Ultra Tight)*

*Specialty tapes*

## MISSION STATEMENT

Be competitively positioned as a product and service provider catering for material fabricators, convertors and users in the electronic related industries.



## OBJECTIVE

To excel product qualities and services consistantly, so as to satisfy customers' continuous needs and aspirations.

To provide workable solutions and suggestions in the areas of product application.



## INTRODUCTION

Edehege (ADH) is a customer-oriented group of companies operating in the regional business environment. Through understanding the growing needs for better products and services in the electronic related industries, ADH was established by Edehege Adhesive Products Pte Ltd in Singapore, Edehege Film Products Co Ltd in Taipei Taiwan, Edehege Bond Material Co Ltd in Wuxi China, Edehege Industries Enterprise in Klang Malaysia and Edehege Industrial Products in Bangkok Thailand. Together, the group strategise and coordinate their products and services to satisfy their customers' ultimate wants and needs.

By combining the group's sources and resources within the strategic locations, ADH is capable of contributing to price competitiveness (combine purchase), goods availability (keep stock & minimise MOQ) and quick response to customers in the region.

ADH is also able to provide multi-layered materials customised to increase customers' production efficiency and effectiveness while reducing customers' time, process and risk of material loss.

ADH always says "We stick to your requirements".



	ITEM NAME Characteristics	DESCRIPTION		SAMPLE
		THICKNESS (mm)	PEEL STRENGTH (N/25mm)	
DOUBLE SIDED TAPES	<b>SK 800EX</b> General purpose / Non-woven	A : 0.15 L : 0.16	1,800 ACR / PSA	<ul style="list-style-type: none"> <li>• General purpose for metals, plastics, felts, foam etc.</li> <li>• Good adhesion properties</li> <li>• Good weatherability</li> <li>• Uniform coating and thick release paper suitable for half-cut process</li> <li>• <b>UL File No. MH13608</b></li> </ul>
	<b>ADH 1004B</b> General purpose / Tissue / Black	A : 0.16 L : 0.13	1,600 ACR / PSA	<ul style="list-style-type: none"> <li>• General purpose for metals, plastics, felts, foam etc.</li> <li>• Good adhesion properties</li> <li>• Black colour for cosmetic reasons</li> <li>• Release paper suitable for full-cut process</li> </ul>
	<b>ADH 201H</b> Economical / Tissue	A : 0.105 L : 0.12	1,700 ACR / PSA	<ul style="list-style-type: none"> <li>• Excellent for felt, non-woven fabric and foams</li> <li>• Suitable for metals, plastics, glass and acrylics etc.</li> <li>• High tackiness</li> <li>• Release paper suitable for full-cut process</li> <li>• Very cost effective for general purpose</li> </ul>
	<b>KT 412AD</b> Economical / Tissue	A : 0.11 L : 0.13	1,400 ACR / PSA	<ul style="list-style-type: none"> <li>• Excellent for PU foams (ester or ether-based).</li> <li>• Suitable for metals, plastics, fabrics etc.</li> <li>• Release paper suitable for full-cut process.</li> <li>• <b>UL File No. MH28091</b></li> </ul>
	<b>ADH 3100 series</b> Durable / Acrylic Foam Grey / White / Clear	A : Various L : Various	> 3,000 ACR / PSA	<ul style="list-style-type: none"> <li>• High bonding strength on metals, plastics, glass etc.</li> <li>• Good damping and aging properties</li> <li>• Excellent outdoor weatherability</li> <li>• Excellent resistance to water, solvent, dust &amp; sunlight</li> <li>• Release paper suitable for die-cut process</li> </ul>
	<b>SC UT series</b> Durable / Acrylic Foam Grey / White / Clear	A : Various L : Various	> 3,000 ACR / PSA	<ul style="list-style-type: none"> <li>• Comes in various carriers, colours &amp; bonding characteristics</li> <li>• Good damping and aging properties</li> <li>• Excellent resistance to water, solvent, dust &amp; sunlight</li> <li>• Release paper suitable for die-cut process</li> <li>• <b>UL File No. E63260</b></li> </ul>
	<b>ADH 7701</b> Differential / PET	A : 0.095 FL : 0.05 PL : 0.15	1,000 (Si) 1,200 (ACR) PSA	<ul style="list-style-type: none"> <li>• Bonding silicone rubber and plastic/metal parts after tape die-cut</li> <li>• Suitable for most surfaces</li> <li>• Good weatherability</li> <li>• Release paper suitable for half-cut process</li> </ul>
	<b>TY 3281B</b> Differential / PET	A : 0.114 L : 0.114	935 (Si) 1,265 (ACR) PSA	<ul style="list-style-type: none"> <li>• Bonding silicone rubber and plastic/metal parts before die-cut</li> <li>• Suitable for most surfaces</li> <li>• Good weatherability</li> <li>• Release paper suitable for half-cut process</li> <li>• Continuous temperature : -40 to 163°C</li> </ul>
	<b>TY 1724A</b> Differential / PET	A : 0.074 L : 0.09	1,400 (Perm) 570 (Remov) ACR / PSA	<ul style="list-style-type: none"> <li>• Permanent side provides strong bonding to most surfaces</li> <li>• Removable side provides temporary positioning with no residue</li> <li>• Suitable for both rigid and non-rigid surfaces.</li> <li>• Release paper suitable for full-cut process</li> </ul>
	<b>TY 33M8 Series</b> PET Carrier	33M8 : 0.080 33M8H : 0.104 L : 0.114	2,000 (33M8) 2,500 (33M8H) ACR / PSA	<ul style="list-style-type: none"> <li>• Good for felt, fabrics, PU foams, CR foams and other rough surfaces</li> <li>• Suitable for metals, plastics and other rigid surfaces</li> <li>• Provides dimension stability to filmsy materials</li> <li>• Humidity and plasticiser migration resistance</li> <li>• Release paper suitable for full-cut process</li> </ul>
<b>TY 3000 Series</b> Transfer Tapes	3000-1 : 1mil 3000-2 : 2mils 3000-3 : 3mils 3000-4 : 4mils 3000-5 : 5mils L : 0.114	1,500 ~ 4,500 (1mil ~ 5mils) ACR / PSA	<ul style="list-style-type: none"> <li>• Various thicknesses to choose from</li> <li>• General purpose for metals, plastics, foams, felts, rubbers etc.</li> <li>• Suitable for bonding decals, escutcheons &amp; nameplates on appliances</li> <li>• Good resistance to humidity; High tack properties</li> <li>• Release paper suitable for die-cut process</li> </ul>	
SHIELDING TAPES : ALUMINIUM	<b>ADH 6400 Series</b> Aluminium Foil Tape	6400 : 0.04 6450 : 0.05 6475 : 0.075 64100 : 0.10 A : 0.03 L : 0.13	1,200 ACR / PSA	<ul style="list-style-type: none"> <li>• Shielding EMI/RFI interference</li> <li>• Thermal insulation / Heat reflective</li> <li>• Adheres well on most surfaces</li> <li>• Economical comparing to Copper Foil</li> <li>• Release paper suitable for die-cut process</li> </ul>
	<b>ADH 6420D</b> Double-Sided Conductive Aluminium Foil Tape	C : 0.03 A : 0.09 L : 0.13	1,000 COND-ACR / PSA	<ul style="list-style-type: none"> <li>• Bonding &amp; connecting conductive parts together without soldering</li> <li>• Shielding EMI/RFI interference. Resistivity &lt;0.5 Ohm</li> <li>• Good dimension stability</li> <li>• Also known as conductive tape</li> <li>• Release paper suitable for die-cut process</li> </ul>
	<b>ADH 6440 / E</b> Conductive Aluminium Foil Tape / Embossed	C : 0.04 A : 0.03 L : 0.13	1,000 COND-ACR / PSA	<ul style="list-style-type: none"> <li>• Shielding EMI/RFI interference.</li> <li>• Resistivity &lt;0.5 Ohm. Embossed foil surface for better performance</li> <li>• Connects without soldering</li> <li>• Economical comparing to Copper Foil</li> <li>• Release paper suitable for full-cut process</li> </ul>
	<b>SC AL7080</b> Aluminium Foil Tape	C : 0.08 A : 0.04 L : 0.12	1,600 ACR / PSA	<ul style="list-style-type: none"> <li>• Shielding EMI/RFI interference</li> <li>• Thermal insulation / Heat reflective</li> <li>• Adheres well on most surfaces</li> <li>• Economical comparing to Copper Foil</li> <li>• Release paper suitable for die-cut process</li> </ul>

Important : Information provided above is not intended for specification development and does not constitute a warranty. Users should determine the suitability of application independently prior to use.

Note : A = Adhesive L/PL = Release Paper / Liner FL = Release Film / Liner C = Carrier / Backing ACR = Acrylic Adhesive Si = Silicone Adhesive PSA = Pressure Sensitive Adhesive

	ITEM NAME Characteristics	DESCRIPTION		SAMPLE
		THICKNESS (mm)	PEEL STRENGTH (N/25mm)	
SHIELDING TAPES : COPPER FOILS	<b>ADH 5400</b> R/A Copper Foil Tape	C : 0.035 A : 0.03 L : 0.13	1,200 ACR / PSA	<ul style="list-style-type: none"> <li>Shielding EMI/RFI interference in compact circuitries</li> <li>Rolled/Annealed Copper foil purity &gt;99.9%</li> <li>Adheres well on most surfaces</li> <li>Release paper suitable for die-cut process</li> </ul>
	<b>ADH 5420 / D</b> Conductive R/A Copper Foil Tape / Double-Sided Conductive R/A Copper Foil Tape	5420 : 0.035 5420D : 0.025 A : 0.04 / 0.06 L : 0.13	900 COND-ACR / PSA	<ul style="list-style-type: none"> <li>Bonding &amp; connecting conductive parts together without soldering</li> <li>Shielding EMI/RFI interference. Resistivity &lt;0.5 Ohm</li> <li>Rolled/Annealed Copper foil purity &gt;99.9%</li> <li>Adheres well on most surfaces</li> <li>Release paper suitable for die-cut process</li> </ul>
	<b>ADH 5430E</b> Conductive Embossed R/A Copper Foil Tape	C : 0.035 A : 0.04 L : 0.13	900 COND-ACR / PSA	<ul style="list-style-type: none"> <li>Embossed surface promotes better shielding performance.</li> <li>Resistivity &lt;0.5 Ohm.</li> <li>Connects without soldering.</li> <li>Adheres well on most surfaces</li> <li>Release paper suitable for die-cut process</li> </ul>
	<b>ADH 5500</b> E/D HTE Copper Foil Tape	C : 0.036 A : 0.035 L : 0.11	1,600 ACR / PSA	<ul style="list-style-type: none"> <li>Shielding of EMI/RFI interference.</li> <li>HTE copper foil less prone to damage corners &amp; wrinkles</li> <li>High bonding strength at high temperature. 130°C</li> <li>Economical comparing to R/A Copper Foil.</li> <li>Release paper suitable for die-cut process</li> </ul>
	<b>SC CU7040</b> E/D Copper Foil Tape	C : 0.04 A : 0.04 L : 0.12	2,000 ACR / PSA	<ul style="list-style-type: none"> <li>Shielding of EMI/RFI interference.</li> <li>Electro-deposited copper foil less prone to damage corners &amp; wrinkles</li> <li>High bonding strength</li> <li>Economical comparing to R/A Copper Foil.</li> <li>Release paper suitable for die-cut process</li> </ul>
	<b>SC CU7636R</b> Conductive R/A Copper Foil Tape	C : 0.04 A : 0.03 L : 0.12	800 COND-ACR / PSA	<ul style="list-style-type: none"> <li>Bonding &amp; connecting conductive parts together without soldering</li> <li>Shielding EMI/RFI interference. Resistivity &lt;0.3 Ohm</li> <li>Rolled/Annealed Copper foil purity &gt;99.92%</li> <li>Adheres well on most surfaces</li> <li>Release paper suitable for die-cut process</li> </ul>
SHIELDING TAPES : FABRICS	<b>ADH 1410 series</b> Conductive Fabric Tape / FR Grade / Patterned / Nickel Based	C : 0.10 A : 0.025 L : 0.13	900 COND-ACR / PSA	<ul style="list-style-type: none"> <li>Shielding EMI/RFI interference. Connects without soldering.</li> <li>Resistivity &lt;0.05 Ohm</li> <li>For wrapping conductive foam or felt gaskets</li> <li>Very flexible; Suitable for adhering to uneven surfaces inside chasis</li> <li>Release paper suitable for die-cut process</li> </ul>
	<b>ADH 1610 series</b> Conductive Fabric Tape / FR Grade / Gold Based	C : 0.10 A : 0.025 L : 0.13	900 COND-ACR / PSA	<ul style="list-style-type: none"> <li>Shielding EMI/RFI interference. Connects without soldering.</li> <li>Resistivity &lt;0.02 Ohm, better than Nickel based type.</li> <li>For wrapping conductive foam or felt gaskets</li> <li>Very flexible; Suitable for adhering to uneven surfaces inside chasis</li> <li>Release paper suitable for die-cut process</li> </ul>
	<b>ADH 1510 series</b> PET Laminated Conductive Fabric Tape	C : Various Multi-layers	900 COND-ACR / PSA	<ul style="list-style-type: none"> <li>Shielding EMI/RFI interference. Connects without soldering.</li> <li>Resistivity &lt;0.06 Ohm</li> <li>For shielding and insulating with the top PET layer</li> <li>Very flexible; Suitable for bending or moving parts</li> <li>Release paper suitable for die-cut process</li> </ul>
FILM & FOILS : SPECIAL / CUSTOMISE	<b>PET / AL Series</b> Customised Lamination Polyester Film & Aluminium Foil	C : Various Multi-layers	NA	<ul style="list-style-type: none"> <li>Shielding EMI/RFI interference</li> <li>Packaging for static sensitive component parts</li> <li>Overlay on FPC or FFC for shielding &amp; static discharge purpose</li> <li>Economical comparing to Copper Foil</li> <li>Suitable for die-cut process; Supply in slitted rolls or sheet form</li> </ul>
	<b>PET / CU Series</b> Customised Lamination Polyester Film & Copper Foil	C : Various Multi-layers	NA	<ul style="list-style-type: none"> <li>Shielding EMI/RFI interference</li> <li>Ground noise grounding layer for membrane switch applications</li> <li>Overlay on FPC or FFC for shielding &amp; static discharge purpose</li> <li>More effective performance comparing to Aluminium Foil</li> <li>Suitable for die-cut process; Supply in slitted rolls or sheet form</li> </ul>
	<b>AL Foils</b> Aluminium Foils	C : Various	NA	<ul style="list-style-type: none"> <li>Shielding EMI/RFI interference</li> <li>Static noise discharge</li> <li>Common grades are AA1100, AA1235, AA1145 and AA5052</li> <li>Supply in various thickness, temper and roll sizes</li> <li>Suitable for die-cut process</li> </ul>
	<b>CU Foils</b> Copper Foils	C : Various	NA	<ul style="list-style-type: none"> <li>Shielding EMI/RFI interference</li> <li>Static noise discharge</li> <li>Rolled annealed or electro deposited types</li> <li>Supply in various thickness, temper and roll sizes</li> <li>Suitable for die-cut process</li> </ul>
	<b>DMS Series</b> 1 or 2 sides Metalised Polyester Film	C : Various	NA	<ul style="list-style-type: none"> <li>Shielding weak EMI/RFI interference. Static noise discharge</li> <li>Suitable for packaging sensitive components. Shielding FFC</li> <li>Flexible and dimensional stable</li> <li>Economical comparing to PET-Foil laminates</li> <li>Suitable for die-cut process</li> </ul>
	<b>ADH 2064 HS</b> Heat Sealable AL Foil / PET Film	C : 0.05 A : 0.01	1,200 ACR / HSA	<ul style="list-style-type: none"> <li>Shielding EMI/RFI interference. Static noise discharge</li> <li>Laminates on FPC or FFC moving portion for shielding purpose</li> <li>Suitable for sealing laser printer toner cartridges</li> <li>Better performance comparing to metalised film.</li> <li>Suitable for die-cut process</li> </ul>

Important : Information provided above is not intended for specification development and does not constitute a warranty. Users should determine the suitability of application independently prior to use.

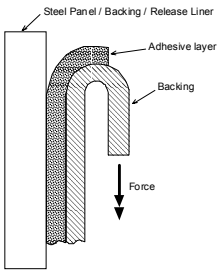
Note : A = Adhesive L/PL = Release Paper / Liner FL = Release Film / Liner C = Carrier / Backing ACR = Acrylic Adhesive Si = Silicone Adhesive PSA = Pressure Sensitive Adhesive

	ITEM NAME Characteristics	DESCRIPTION		SAMPLE
		THICKNESS (mm)	PEEL STRENGTH (N/25mm)	
INSULATION TAPES : PET FILM TAPES	<b>ADH 2000 Series</b> Clear Polyester Film Tape	2001 : 1mil 2002 : 2mils 2003 : 3mils 2004 : 4mils A : 0.03 L : 0.13	1,200 ACR / PSA	<ul style="list-style-type: none"> <li>Adheres well on plastics, metals, foils and paper</li> <li>Backing uses high quality polyester film for outstanding presentation</li> <li>Suitable for insulation and overlay on metal foil parts</li> <li>Comes in various film thicknesses and adhesive systems</li> <li>Suitable for die-cut process</li> </ul>
	<b>ADH 2000B Series</b> Printed Black Polyester Film Tape	2001B : 1mil 2002B : 2mils 2003B : 3mils 2004B : 4mils A : 0.04 L : 0.13	1,000 ACR / PSA	<ul style="list-style-type: none"> <li>Adheres well on plastics, metals, foils and paper</li> <li>Printed black polyester film exhibits better opacity</li> <li>Suitable for insulation and overlay on metal foil parts</li> <li>Comes in various film thicknesses</li> <li>Suitable for die-cut process</li> </ul>
	<b>ADH 2000BF Series</b> Pigment Black Polyester Film Tape	2001BF : 1mil 2002BF : 2mils to 20075BF : 7.5mils A : 0.035 L : 0.13	1,200 ACR / PSA	<ul style="list-style-type: none"> <li>Adheres well on plastics, metals, foils and paper</li> <li>Black polyester film (Lumirror X30) exhibits smooth and dark surface</li> <li>Suitable for insulation and overlay on metal foil parts</li> <li>Comes in various film thicknesses</li> <li>Suitable for die-cut process</li> </ul>
	<b>ADH 200X Series</b> Customised Polyester Film Tape	C : Various A : Various L : Various	Various ACR / PSA	<ul style="list-style-type: none"> <li>Direct coating on customer specified polyester film for special purpose</li> <li>Various adhesive systems; adhesion, tackiness, high-temp etc.</li> <li>Economical comparing to self-laminated transfer tapes on film</li> <li>Suitable for die-cut process</li> </ul>
HIGH TEMPERATURE SPECIALTY TAPES	<b>ADH 2100 Series</b> Polyimide Film Tapes	C : Various A : Various L : Various	Various Si or ACR / PSA	<ul style="list-style-type: none"> <li>Direct coating on customer specified polyimide film</li> <li>Various adhesive systems; adhesion, tackiness, high-temp etc.</li> <li>Economical comparing to self-laminated transfer tapes on film</li> <li>Suitable for die-cut process</li> </ul>
	<b>ST 130UL</b> Polyimide Film Tape	C : 0.025 A : 0.040	750 Si / PSA	<ul style="list-style-type: none"> <li>Very high heat resistance; &gt;200°C</li> <li>Most suitable for solder masking as film can withstand the heat and adhesive leaves no residue after removal</li> <li>Suitable for die-cut process when optional release film is attached</li> <li><b>UL File No. E220986</b></li> </ul>
	<b>TY 781</b> Silicone Splicing Tape	C : 0.03 A : 0.04	800 Si / PSA BLUE / RED	<ul style="list-style-type: none"> <li>High adhesion strength to silicone coated surfaces; Release paper</li> <li>No adhesive residue after removal</li> <li>Most suitable for splicing release paper or film</li> <li>For temporary masking, holding and securing movable parts</li> <li>High operating temperature; Up to 316°C</li> </ul>
	<b>SC T4082S</b> Silicone Polyester Tape	C : 0.038 A : 0.033	750 Si / PSA BLUE	<ul style="list-style-type: none"> <li>High adhesion strength to silicone coated surfaces; Release paper</li> <li>No adhesive residue at removal even after long period of aging</li> <li>Most suitable for splicing release paper or film</li> <li>For temporary masking, holding and securing movable parts</li> </ul>
INSULATION / CONDUCTIVE / DECORATIVE / SPECIAL MATERIALS	<b>PC FILMS</b> Polycarbonate	Various	NA	<ul style="list-style-type: none"> <li>Supply in sheets or rolls</li> <li>Various colours, surface treatments, texture and thicknesses</li> <li>Suitable for insulation, thermoforming, printing, die-cutting etc.</li> <li>Economical and reliable grades to choose from</li> <li>Mostly with UL approval</li> </ul>
	<b>PET FILMS</b> Polyester	Various	NA	<ul style="list-style-type: none"> <li>Supply in rolls</li> <li>Various colours, surface treatments and thicknesses</li> <li>Suitable for insulation, lamination, printing, die-cutting etc.</li> <li>Economical and reliable grades to choose from</li> <li>Mostly with UL approval</li> </ul>
	<b>PI FILMS</b> Polyimide	Various	NA	<ul style="list-style-type: none"> <li>Supply in rolls</li> <li>Suitable for heat insulation, high heat resistance parts, die-cutting etc.</li> <li>Economical and reliable grades to choose from</li> <li>Mostly with UL approval</li> </ul>
	<b>THERMAL PAD</b> Silicone Rubber Sheets	Various 0.3 ~ 6.0	NA	<ul style="list-style-type: none"> <li>Conducts heat from components to heat sinks</li> <li>With or without fibre supported</li> <li>Easy to use comparing to traditional liquid bond</li> <li>Suitable for die-cut process</li> <li>Mostly with UL approval</li> </ul>
	<b>SC SP7600</b> Heat Bondable Speaker Net (Fabric)	C : 0.10 A : 0.10	NA	<ul style="list-style-type: none"> <li>Modified EVA based adhesive coated on polyester fibre (70 mesh)</li> <li>Suitable for use in speaker inner mesh as a protection from dust</li> <li>Good sound transmission; very low damping</li> <li>Easy to assemble; just apply heat on the desire bonding areas</li> <li>Adheres well to plastics, metals and paper.</li> </ul>
	<b>FOAM GASKET</b> Conductive Foam Gaskets	NA	NA	<ul style="list-style-type: none"> <li>Shielding EMI/RFI interference</li> <li>Provides cushion and grounding of noise between bulky components</li> <li>Connects without soldering</li> <li>Easy to use</li> <li>Comes in various widths and heights; With or without adhesive tape</li> </ul>
<b>FELT GASKET</b> Conductive Felt Gaskets	NA	NA	<ul style="list-style-type: none"> <li>Shielding EMI/RFI interference</li> <li>Provides weak cushion and grounding of noise between closely packed bulky components</li> <li>Connects without soldering; Easy to use</li> <li>Comes in various layer combinations; With or without adhesive tape</li> </ul>	

Important : Information provided above is not intended for specification development and does not constitute a warranty. Users should determine the suitability of application independently prior to use.

Note : A = Adhesive L/PL = Release Paper / Liner FL = Release Film / Liner C = Carrier / Backing ACR = Acrylic Adhesive Si = Silicone Adhesive PSA = Pressure Sensitive Adhesive

# GLOSSARY



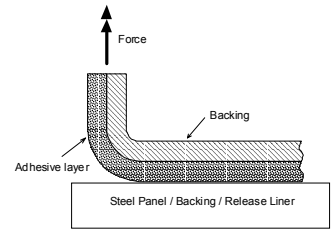
## PSTC 101 (Method A-E) 180° PEEL STRENGTH

Measuring Unit : N/24mm (Force/Width)

### General Test Conditions

1. Steel Panel : SUS 302 or 304 BA finished
2. Specimen size : 24 ± 0.5 mm x 300 mm
2. Roller : Steel 85 ± 2.5 mm diameter, 45 ± 1.5 mm width, Rubber sleeve approx. 6mm thick & hardness 80 ± 5, Mass 2040 ± 45 g.
3. Peel Speed : 300 mm/min or 5.0 ± 0.2 mm/sec.
4. Environment : 23 ± 1 °C & 50 ± 5 % RH.

## PSTC 101 (Method F) 90° PEEL STRENGTH

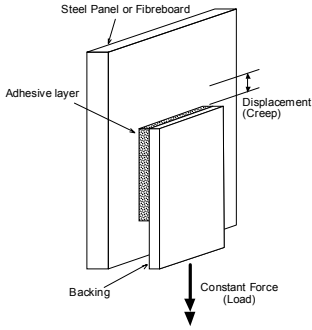


## PSTC 107 (Method A, B, C & G) SHEAR STRENGTH (HOLDING POWER)

Measuring Unit : Hrs & mm (Drop & Creep)

### General Test Conditions

1. Steel Panel : SUS 302 or 304 BA finished
2. Specimen size : 12 mm x 12 mm or 24 mm x 24 mm (± 0.5 mm).
2. Roller : Steel 85 ± 2.5 mm diameter, 45 ± 1.5 mm width, Rubber sleeve approx. 6mm thick & hardness 80 ± 5, Mass 2040 ± 45 g.
3. Mass : 1000 ± 5 g.
4. Environment : 23 ± 1 °C & 50 ± 5 % RH.

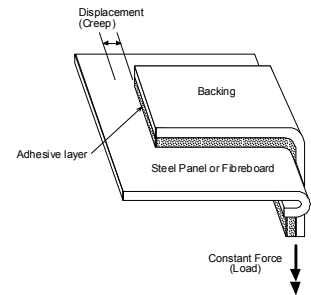


## PSTC 107 (Method D, E & F) SHEAR STRENGTH (HOLDING POWER)

Measuring Unit : 48Hrs & mm (Creep)

### General Test Conditions

1. Steel Panel : SUS 302 or 304 BA finished
2. Specimen size : 12 mm x 12 mm or 24 mm x 24 mm (± 0.5 mm).
2. Roller : Steel 85 ± 2.5 mm diameter, 45 ± 1.5 mm width, Rubber sleeve approx. 6mm thick & hardness 80 ± 5, Mass 2040 ± 45 g.
4. Mass : 1000 ± 5 g.
5. Environment : 23 ± 1 °C & 50 ± 5 % RH.

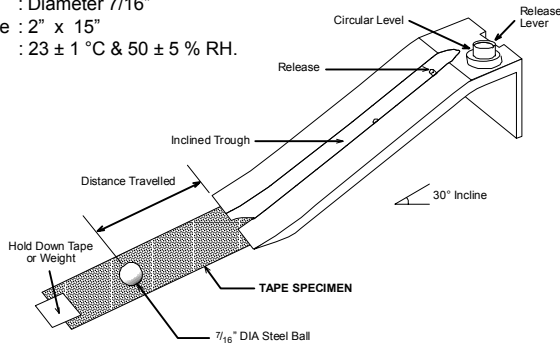


## PSTC 6 TACK ROLLING BALL (INITIAL TACK)

Measuring Unit : Inches (Distance)

### General Test Conditions

1. Steel Ball : Diameter 7/16"
2. Specimen size : 2" x 15"
3. Environment : 23 ± 1 °C & 50 ± 5 % RH.

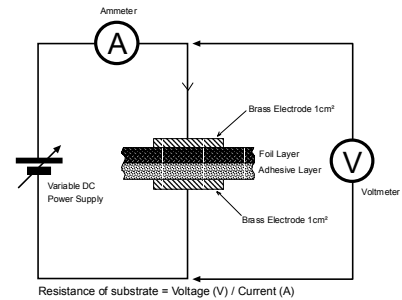


## RESISTANCE MEASURING METHOD

Measuring Unit : Ohm (R = V / I)

### General Test Conditions

1. Brass Electrodes : 1cm x 1cm square area
2. Specimen size : >1cm x >1cm square area
3. Environment : 23 ± 1 °C & 50 ± 5 % RH.



## EDEHEGE ADHESIVE PRODUCTS PTE LTD

19 Woodlands Industrial Park E1 #04-07 Singapore 757719  
Tel : (65) 6894 4508 Fax : (65) 6894 4518  
sales.sg@edehege.com

[www.edehege.com](http://www.edehege.com)

Authorised distributor for

**Tyco**  
**Adhesives**

**SONY**  
Sony Chemicals Singapore

## EDEHEGE FILM PRODUCTS CO LTD

No. 3, Lane 6, Sec. 2, Chieh-Shou Rd, San Hsia Chen, Taipei, TAIWAN.  
Tel : (886) 2-2674 8105 Fax : (886) 2-8671 3122 sales.tw@edehege.com

## EDEHEGE BOND MATERIAL CO LTD

4F 6A Building Liyuan Development Zone Wuxi, Jiangsu Province, CHINA.  
Tel : (86) 510-516 00 65 Fax : (86) 510-516 0255 sales.wx@edehege.com

## EDEHEGE INDUSTRIES ENTERPRISE

No. 12A, Jalan Sri Sarawak 18, Taman Sri Andalas, 41200 Klang, Selangor, MALAYSIA.  
Tel : (60) 3-3324 8975 Fax : (60) 3-3324 9051 sales.my@edehege.com

## EDEHEGE INDUSTRIAL PRODUCTS CO LTD

180 Ladproa 109, Klongchan, Bangkok 10240, THAILAND.  
Tel : (66) 2-731 1098/9 Fax : (66) 2-731 0399 sales.th@edehege.com

## EDEHEGE REPRESENTATIVE OFFICES

- |                                  |                        |                        |                      |
|----------------------------------|------------------------|------------------------|----------------------|
| <b>Jakarta, Indonesia</b>        | Tel : (62) 21-650 7118 | Fax : (62) 21-650 8993 | sales.id@edehege.com |
| <b>Manila, Philippines</b>       | Tel : (63) 2-510 1262  | Fax : (63) 2-912 4811  | sales.ph@edehege.com |
| <b>Ho Chi-Minh City, Vietnam</b> | Tel : (84) 8-860 3048  | Fax : (84) 8-860 1810  | sales.vn@edehege.com |
| <b>Hong Kong</b>                 | Tel : (852) 2790 3916  | Fax : (852) 8208 2044  | sales.hk@edehege.com |

